

*"Flying High on Quality  
...low on price"*



**Energy rated** PVCu windows, doors,  
bi-fold doors and conservatories



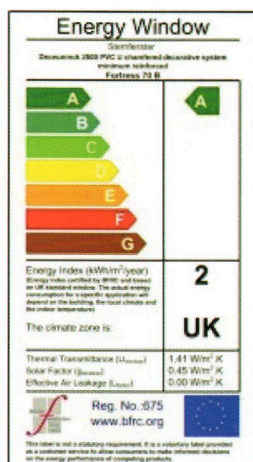
So you think all windows are the same.....

**think again!**

# ENERGY RATED WINDOWS

Our award winning Super Fortress 70 windows are available with the following features: -

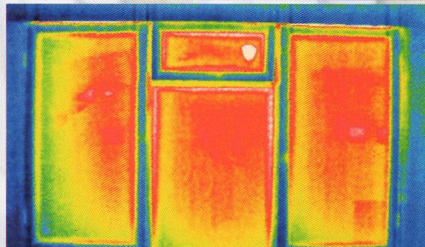
- High security internally beaded
- Sculpted or Chamfered profile
- 28mm double glazed sealed units
- Charcoal grey super spacer bar
- High thermal performance glass
- U'value of 1.4
- **'B' energy rated as standard**
- Recommended by the energy saving trust
- Kitemarked to British Standards BS 7914, BS EN 1279 and BS EN 12600.
- Improved security to Secured by Design standards



Up to 30% of heat in a home is lost through its windows. Energy efficient windows can reduce this by a staggering 94%, helping you to **save energy and money** on your heating bills.

Recent calculations by the Glass and Glazing Federation show that there are significant savings to be made from upgrading to energy rated windows, in some cases up to £697 per year. Log on to [www.ggf.co.uk](http://www.ggf.co.uk) and use the **'carbon calculator'** to find out exactly how much you could be saving each year!

## Installing energy efficient windows could save you up to £697 per year

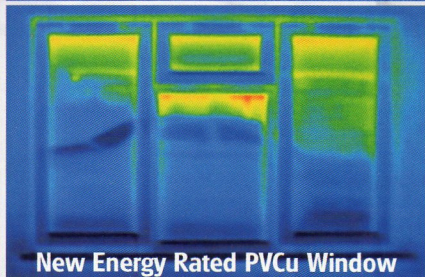


Old Single Glazed Wooden Window

These thermal images show the difference that can be made by installing energy rated windows.

In the top image you can see the heat dissipating through the frame and glass, (the red and orange areas).

The image below was taken after installing a new B rated window, you can see that the amount of heat being lost through the frame is dramatically reduced.



New Energy Rated PVCu Window

**Other benefits** of our energy efficient window range:

- Using warm edge spacer bar the internal glass is warmer which can help reduce condensation and mould by up to 70%
- Warm edge spacer bar also helps reduce noise transmission by up to 2dB.



*"Flying High on Quality  
...low on price"*

Unit 24 Brook House Business Park  
Hadleigh Road Industrial Estate  
Ipswich, Suffolk, IP2 0EF  
Tel: 01473 288 690 Web: [www.falconwindows.com](http://www.falconwindows.com)

**FENSA**  
Registered Company  
26333



KM 27305  
BS EN 1279



KM 77653  
BS EN 12600



KM 33518  
BS 7950/7412



KM 13717  
BS 7412

How **green** do you want to B?



## Technical information

We are regularly audited by the British Standards Institute to ensure that our frames and units are manufactured to the latest quality and security Kitemark standards, giving you total peace of mind regarding our production methods and our guarantees.



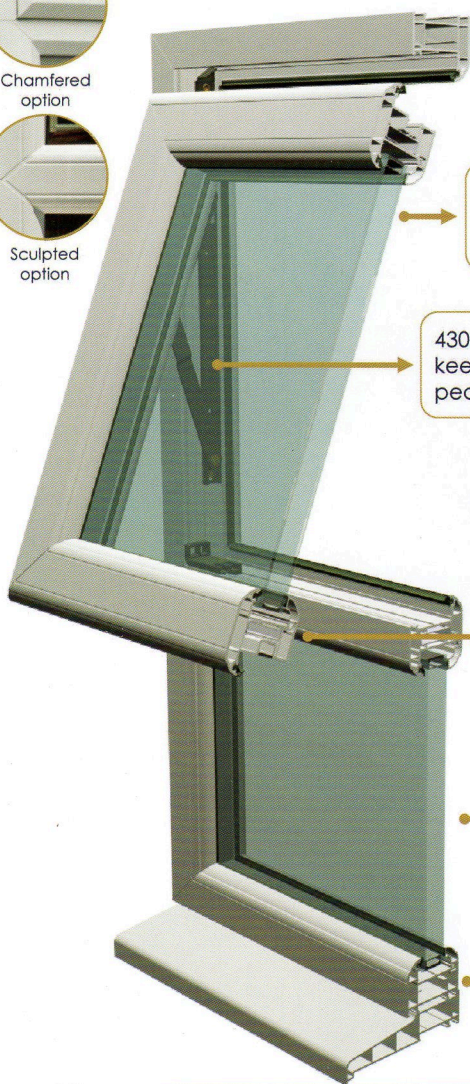
# deceuninck®



Chamfered option



Sculpted option



High impact PVC with a multi-chambered design, extruded to BS 7413:1991. This allows us to reinforce the frames in order to build in more strength, to improve the security and thermal performance.

Utilising warm edge spacer technology and specially coated glass enables us to offer a thermally efficient 28mm B rated unit.

430 grade stainless steel hinges and dual position keeps are tested to cycle runs of 25,000 giving you peace of mind for years of smooth, rust free use.

Utilising the very latest high security shootbolt locks with up to 6 locking points down the opening side, the lock is a substantial barrier against would-be attacks. Unique dual locks in the centre grip the frame and sash shut and when combined with additional claw locks the window passes the BSI security Kitemark, BS7950, giving you an effective security barrier.

Our units are proven to reduce noise transmission by up to 2dB and being 950 x less conductive than aluminium spacer bar units they also help reduce condensation.

All frames are internally beaded, meaning the glass cannot be removed from the outside which offers a higher degree of security than other available windows.

The British Standards Institute is the world's first national standards body, focused on improving systems, applications and processes in business by benchmarking them against set standards. Since 1991 our products have been tested against these standards to ensure that you get a quality product every time.

Secured by Design is the official UK Police flagship initiative supporting the principles of 'designing out crime'. Our windows and doors comply with the latest Secured by Design standards giving you total peace of mind, log on to [www.securedbydesign.com](http://www.securedbydesign.com) for more details.

Remember to look for the Energy Saving Recommended logo when choosing your windows, that way you can be sure they are the most energy efficient, as the whole window is assessed on a rating of A-G by the British Fenestration Ratings Council, log on to [www.energysavingtrust.org.uk](http://www.energysavingtrust.org.uk) for more details.

## Windows

Available in a sculpted or chamfered 70mm high security range of windows to enhance the appearance of your home.

- High security internal beading
- 6 point multi-locking shootbolt
- Key locking security handles
- Low sightline gaskets and seals
- Double weather seals
- Standard B rated



White



Sherwood on tan/white



Rosewood on brown/white



Cherry on white

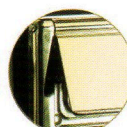
## Doors

We offer the full range of doors including entrance doors, stable doors and panic doors.

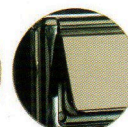
- High security internal beading
- 8 point multi-locking door bolts
- Available with anti-bump cylinders
- Low sightline gaskets and seals
- Full range of moulded panels
- Available with low aluminium thresholds
- Hardware available in a range of colours



White



Gold



Bronze



Chromium

## Conservatories

All made to measure, in any design, from traditional to Edwardian and Victorian through to the complex T and P shaped designs.

- High security internal beading
- Available in any shape, size or design
- Available in all colour ranges
- Available with polycarbonate or glass
- Available with specialist solar reflective glass
- Roofs also available with self cleaning



Lean-to



Edwardian

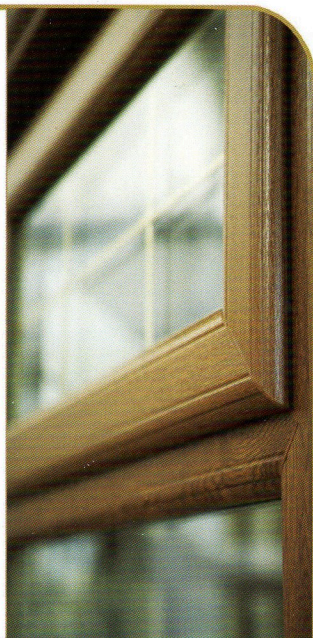


Victorian



T-Shaped

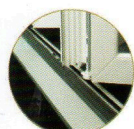
finish our  
dows will  
me.



## Bi-fold doors

Designed as a practical option for covering large openings, our bi-fold doors are available in a range of opening styles and sizes.

- High security internal beading
- All doors open inwards
- Not available in cream on white
- Available with low aluminium threshold
- Please ask for a full technical data sheet



Low all  
threshold

Available schemes



ing patio

ld  
ours



## Glass Fabrication

We manufacture doubled glazed units for both Trade and Retail customers

- Sealed units made to measure
- Single glass cut while you wait
- Stockists of horticultural glass and mirrors
- Professional measuring and fitting services
- Artwork including lead work and sandblast
- Toughened safety glass supplied
- Over 21 years experience



Stained  
glass



Lead  
designs



Georgian  
bar

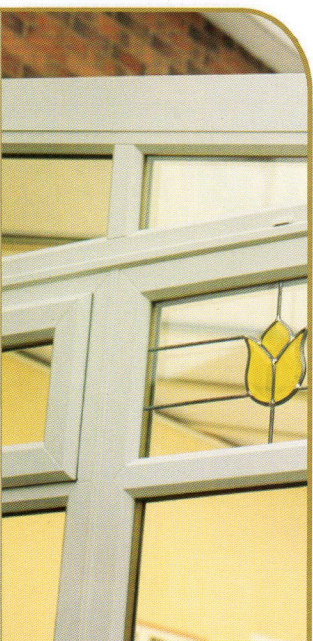


Duplex  
bar



om Lean-  
ough to

s roofs  
ve glass  
g glass



## Vertical Sliders

Utilising sculpted profiles to replicate the appearance of traditional wooden horned sash windows, but with all the benefits of maintenance free PVC.

- Traditional looking sash replacement
- High security internal beading
- Key locking security handles
- Triple weather seals
- Available with horns and Georgian bar
- Available in a White, Sherwood or Rosewood





## PRODUCT RANGE

High security windows



Conservatories



Bi-fold doors



High security doors



Vertical sliders



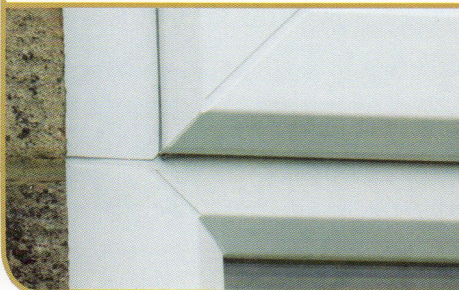
Tilt and Turns



Decorative frames



Chamfered frames



Glass Suppliers



# CONSUMER

## BUYING INFORMATION



- Are you dealing with an **established** business with a proven track record?
- Are the windows **manufactured** to Secured by Design standards?
- Do the products carry any **British Standard Kitemarks**?  
*Without any Kitemarks you will have no guarantee of product conformity.*
- Does the product meet the latest **security standards**?  
*Are there any extra features that will make the product more secure, e.g. anti bump cylinders or claw locks?*
- Will the frames help to **reduce heat loss**?  
*You should be specifying energy rated windows in order to reduce your heating bills, an **A rated energy efficient** window could potentially save you up to £697 per year.*
- What are the product **guarantees**?  
*Research the supplier's guarantee to ensure you are covered.*
- Are the frames 70mm, with low sightline integrated gaskets?
- Are the locking mechanisms stainless steel, with shootbolts and roller cams?

Our Range    Other



### Buyer beware!!

Rarely will the cheapest be the best in the **long run**. When comparing "like with like", compare how long the Company has been established, the quality of their guarantees and their location. If one supplier happens to be some "window fitters" doing "private work" at the weekends, then please bear in mind that their so called 10 Year Guarantee may be of less value than another from a more established Company with a supporting infrastructure.

## What to look for in a window or a door